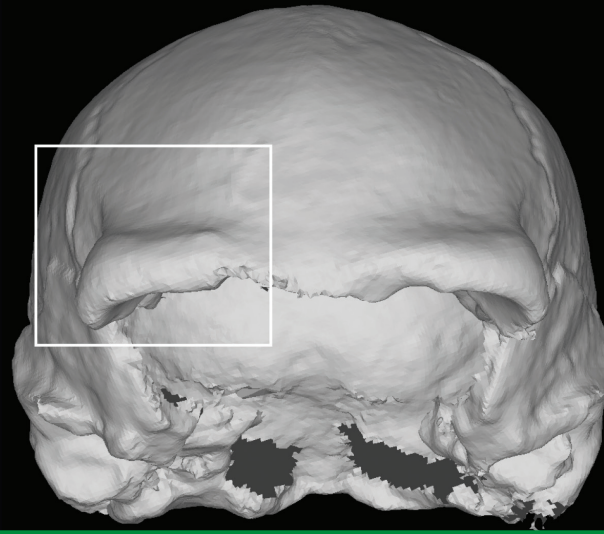
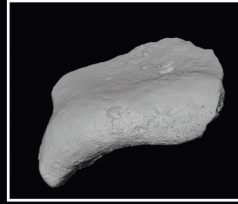
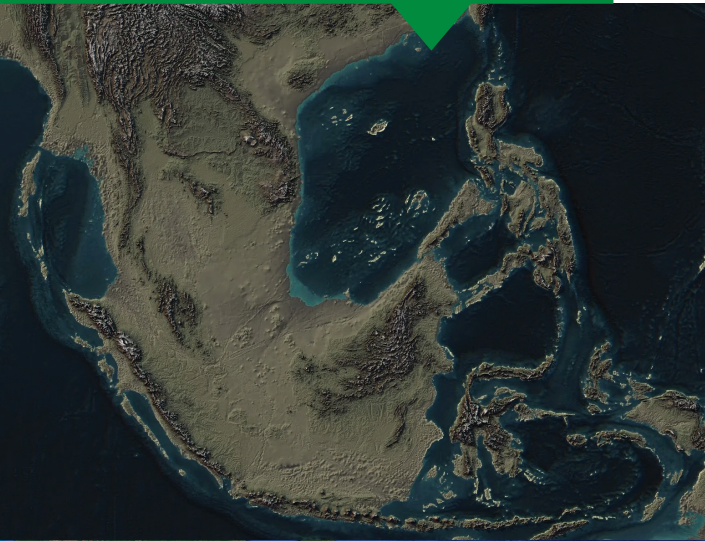


# Lecture

date: Friday 16 May 2025  
location: Van Steenis, Reuvens Hall (Central Hall)  
time: 16:00 - 18:00 hours (Lecture and drinks)



<https://edu.nl/dtrwh>

The Sunda Shelf has been widely exposed during most of the Pleistocene. The area must have played an important role in the dispersal and evolution of species including hominins, however, thus far fossils were only known from the islands. Over the past years, an international team has worked on the first vertebrate site on the submerged shelf. The fossils derive from the fill of a submerged valley, which was dated to ~140 ka. The assemblage covers 36 vertebrate species, including *Homo erectus*. Their presence is also inferred from cut marks and battered ruminant bones. The assemblage provides a unique window to the late Middle Pleistocene vertebrate community of the former lowland plains and the role of hominins therein. Today, the results of the study are published in 'Quaternary Environments and Humans', which is celebrated with this lecture.

## Homo erectus from the sea, new discoveries from the Sunda Shelf

**Programme** - Moderator Prof. Dr. Thijs van Kolfschoten, Leiden University

- 16:00 Welcome by Prof. Dr. Jan Kolen, Dean of the Faculty of Archaeology, Leiden University
- 16:10 Lecture on Hominin Evolution, Dr. Silvia Bello, Natural History Museum, London
- 16:40 Lecture on The Madura hominin site and finds, Harold Berghuis, Leiden University
- 17:00 Drinks / Press conference

MUSEUM  GEOLOGI

 UNIVERSITY  
OF WOLLONGONG  
AUSTRALIA

 BRIN  
BADAN RISET  
DAN INOVASI NASIONAL



UNIVERSITY  
OF COLOGNE



 University of Twente  
The Netherlands

 SEALAND  
COASTAL  
CONSULTANCY



Universiteit  
Leiden  
The Netherlands

FACULTY OF ARCHAEOLOGY

Discover the world at Leiden University